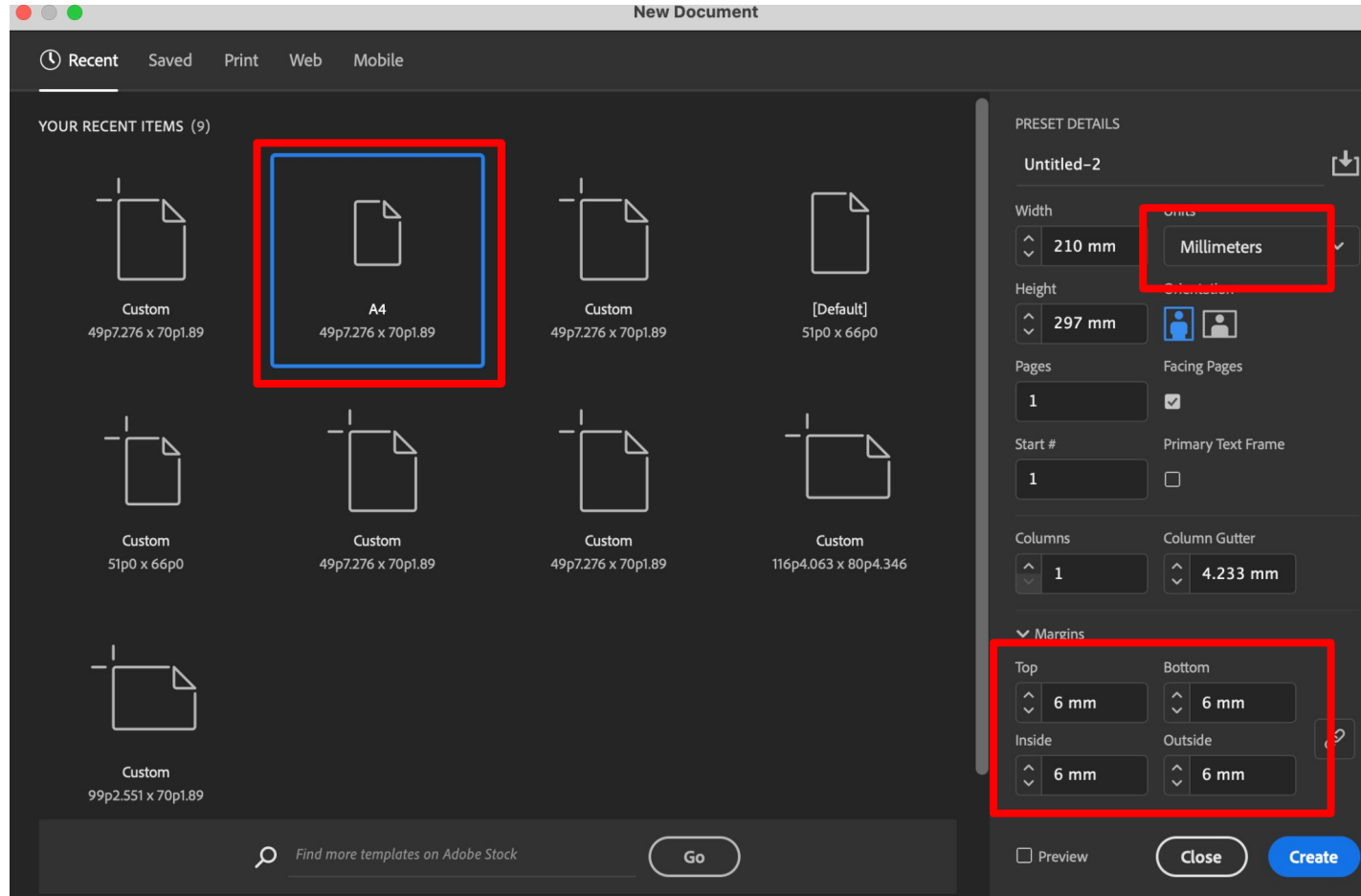
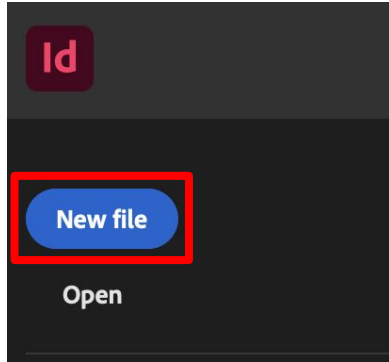


# All About Yearbook (Layouts, Photos)

# Step 1



## Step 2

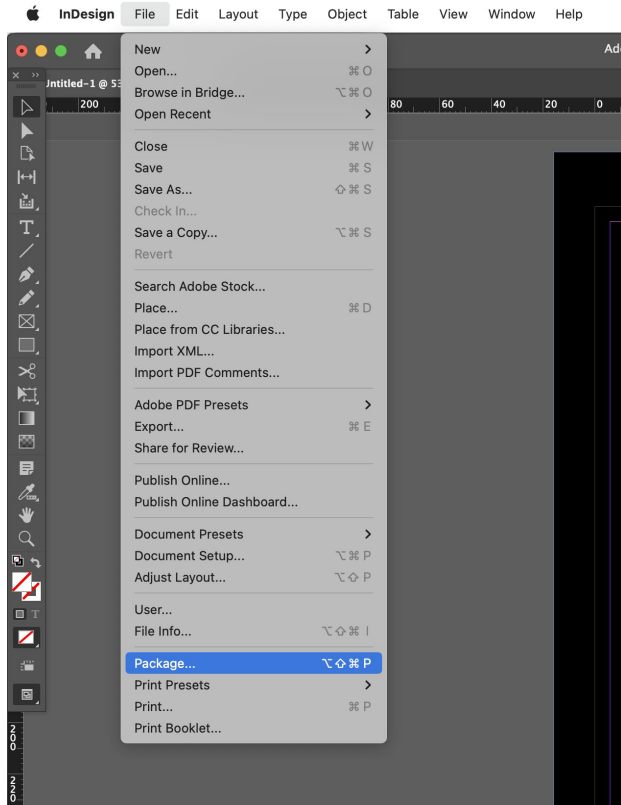
You have to create a square that goes beyond the outer layer of A4.

<https://drive.google.com/file/d/1cM2OQf0g6VjHAs5oiqTmacowQW-3clqo/view?usp=sharing>

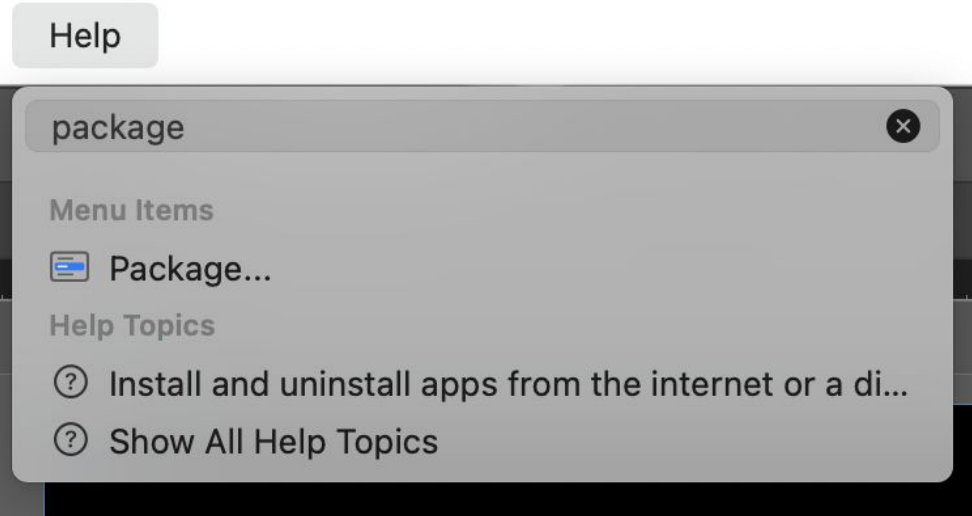
How to package files (once you're done with designs)

[Or watch the video](#)

# Package - Step 1



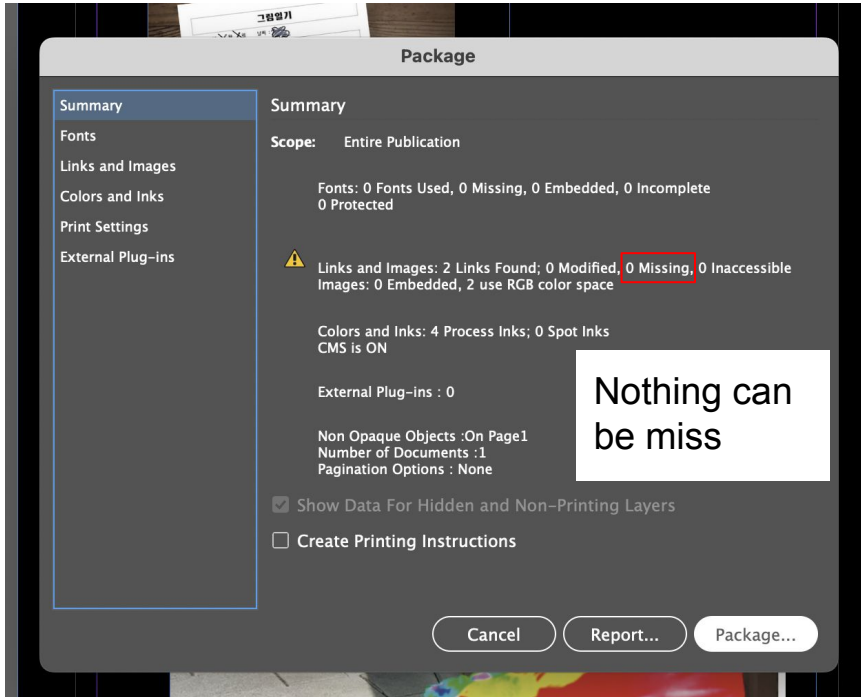
File → package



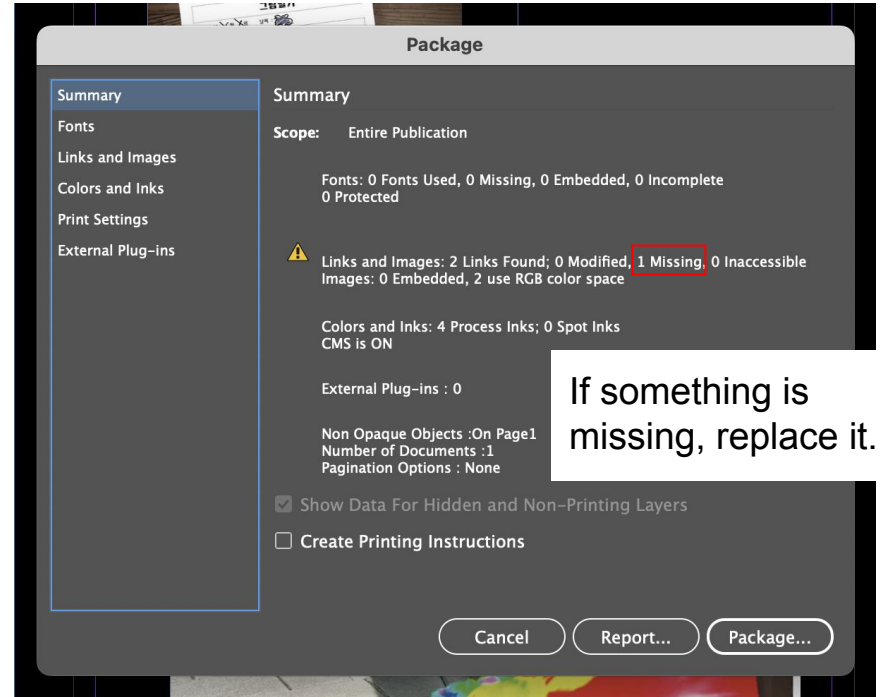
Help → type (package)

# Package - Step 2

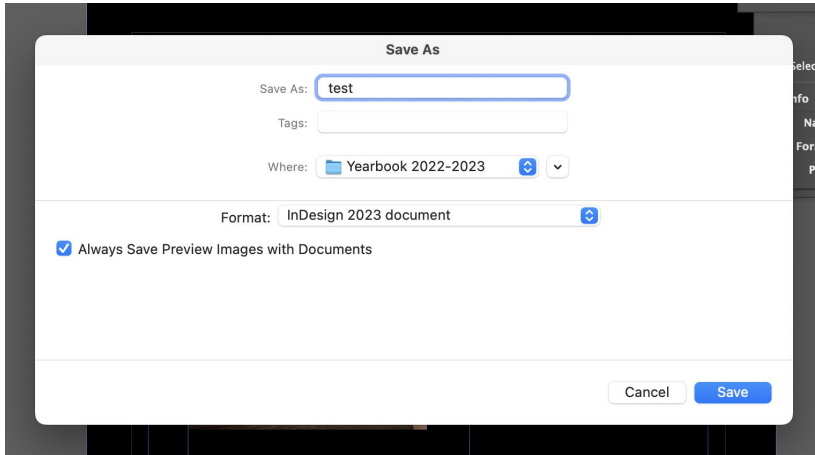
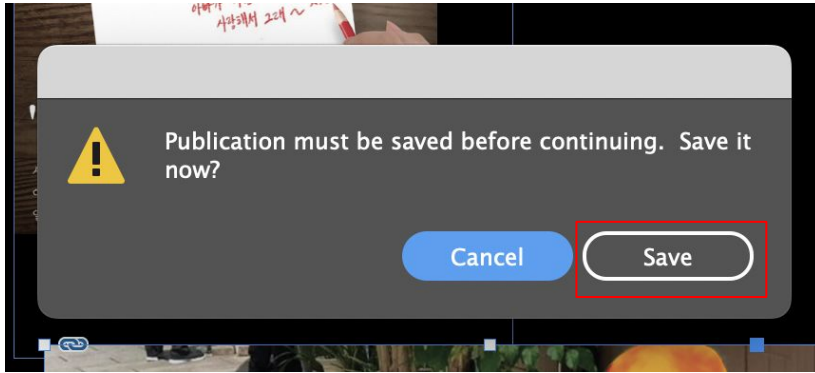
## Correct one



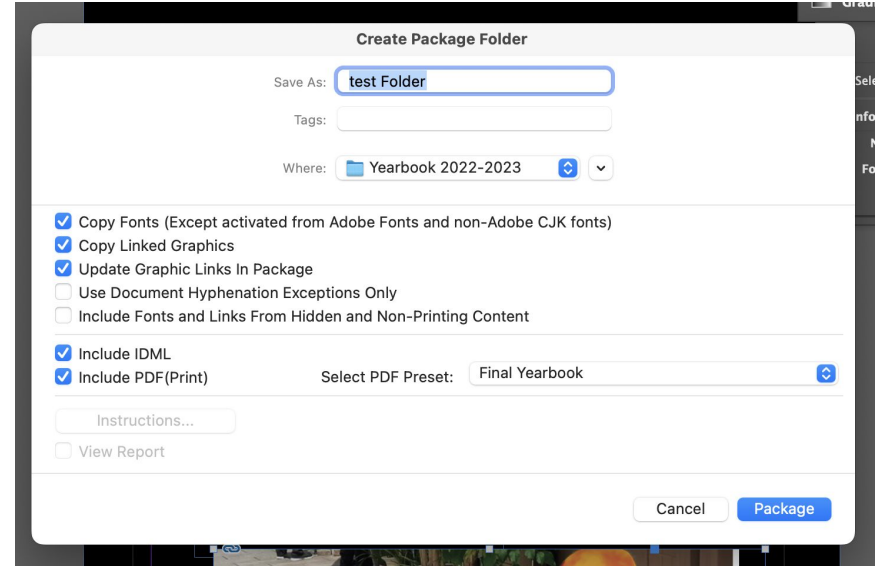
## Fail one



Save it first



Package - Step 2

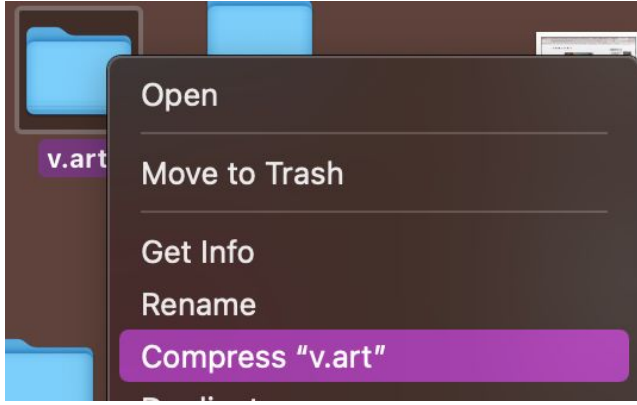


Then package window will pop up



You can find it in your computer

# Turn it into a zip file



→ Ready to upload!



# Camera Settings

## ISO

- Controls how sensitive your camera is to **light**
- Low ISO → for bright conditions (100-400)
- High ISO → for low light, but high ISO can introduce noise (800)

## Shutter Speed

- Fast Shutter Speed
  - Use for capturing action shots, sports, and any subject in motion. It ensures sharpness and freezes motion.
- Moderate Shutter Speed
  - Ideal for general photography and handheld shots without introducing camera shake. Usually, this falls in the range of 1/60 to 1/250 seconds.
- Slow Shutter Speed
  - Use for creative effects such as light trails, motion blur, or capturing night scenes. A tripod is essential to avoid camera shake during slow shutter speeds.

# SONY / CANON

Adjust the focus

MENU



Shutter button  
+  
Turn on and off

In **manual mode**, of course, you control everything - shutter speed, aperture and ISO - however you like. Each **auto mode** gives some of that control over to the camera.

# SONY / CANON

How to adjust  
shutter speed  
→ by clicking menu

To see the the  
screen  
Choice:

Use this “turning buttons”  
→ to select the ISO  
numbers

Adjust ISO

How to see taken photos

Delete button (for photos)

How to see ISO value



# LUMIX



Shutter button

In **manual mode**, of course, you control everything - shutter speed, aperture and ISO - however you like. Each **auto mode** gives some of that control over to the camera.

Turn on and off

# LUMIX



How to change Shutter Speed:  
Turn the button to the left and  
right without pressing any  
buttons

How to see taken photos

How to change ISO:  
Press ISO button and turn the  
button to the left and right

# NIKON

Press a button in the middle while switching the setting.

Set "M" for manual setting.

Set Green Auto button for auto setting.



On and off button.

# NIKON



Press this icon to look pictures you took

How to change ISO:  
Turn the button to the left and right while pressing the button.

How to change Shutter Speed:  
Turn the button to the left and right without pressing any buttons

Make sure you are pointing camera icon to take pictures